

CREATE
YOUR STYLE

SWAROVSKI



DESIGN PROJECT

BRACELET


"HEART LETTERS"

DESIGN PROJECT

BRACELET "HEART LETTERS"



Swarovski crystals

Article	Product Group	Article No.	Amount	Size	Color	Color Code
	Beads	5741	2 pcs.	8 mm	Blush Rose	257

Supplies & Tools

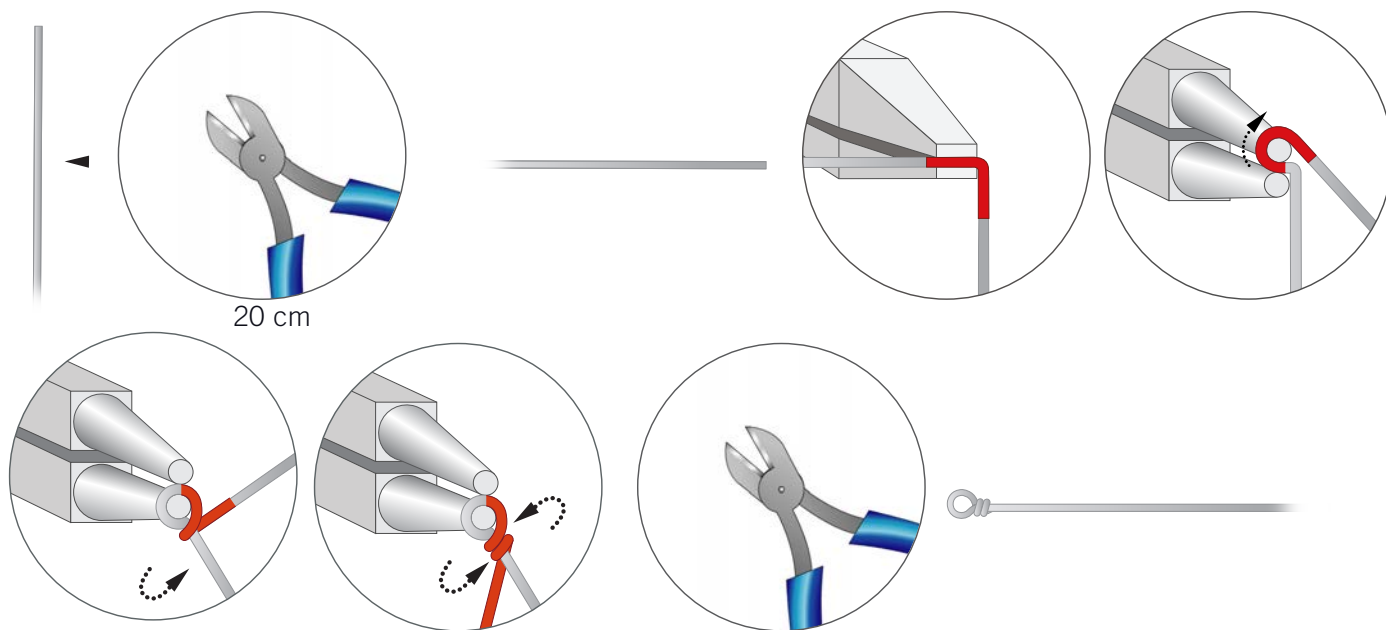
Supplies
 2x Cord endings, silver, Ø 3.2 mm
 Extension chain, silver, 4 cm
 2x Eye pins, silver, 6 cm
 2x Head pins, silver
 2x Jump rings, silver, 4 mm
 1x Jump ring, silver, 6 mm
 1x Lobster clasp, silver
 Leather ribbon, brown, 14 cm, Ø 5 mm
 Wire, silver, 20 cm, Ø 1 mm

Tools
 Flat nose pliers
 Leather needle
 Round nose pliers
 Scissors
 Side cutter

Level of design: **INTERMEDIATE**

Have also a look at the **text instructions** at the last page!

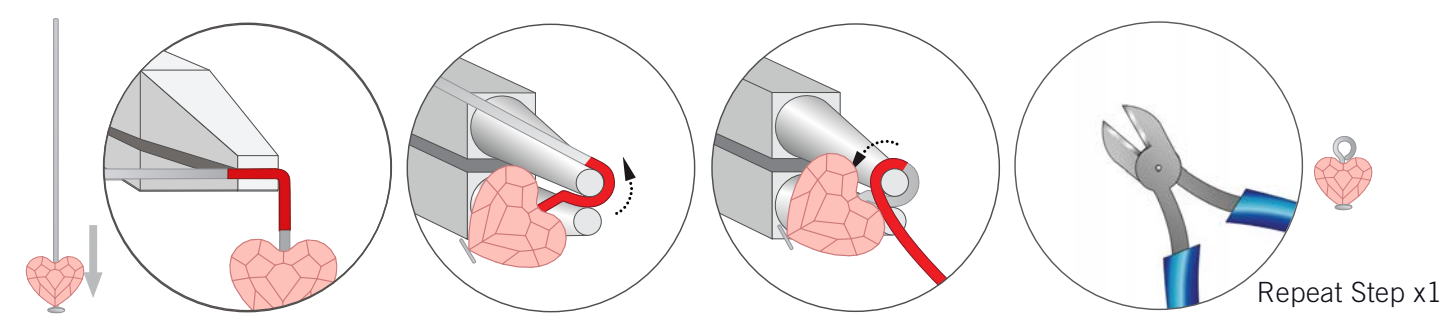
STEP 1



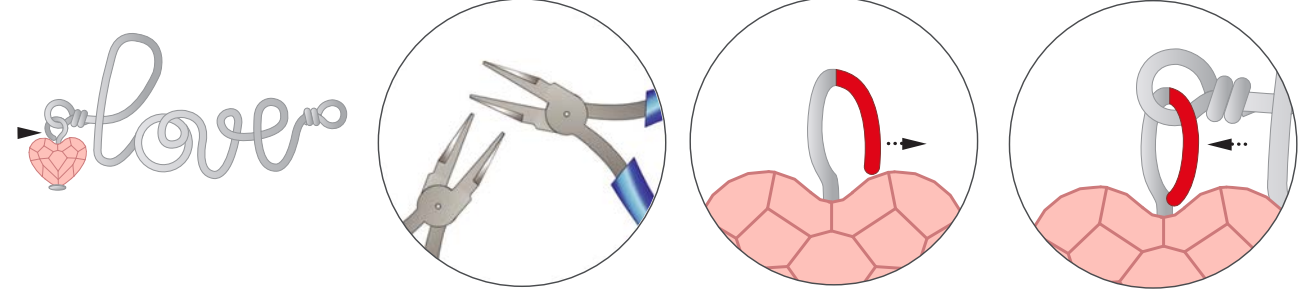
STEP 2



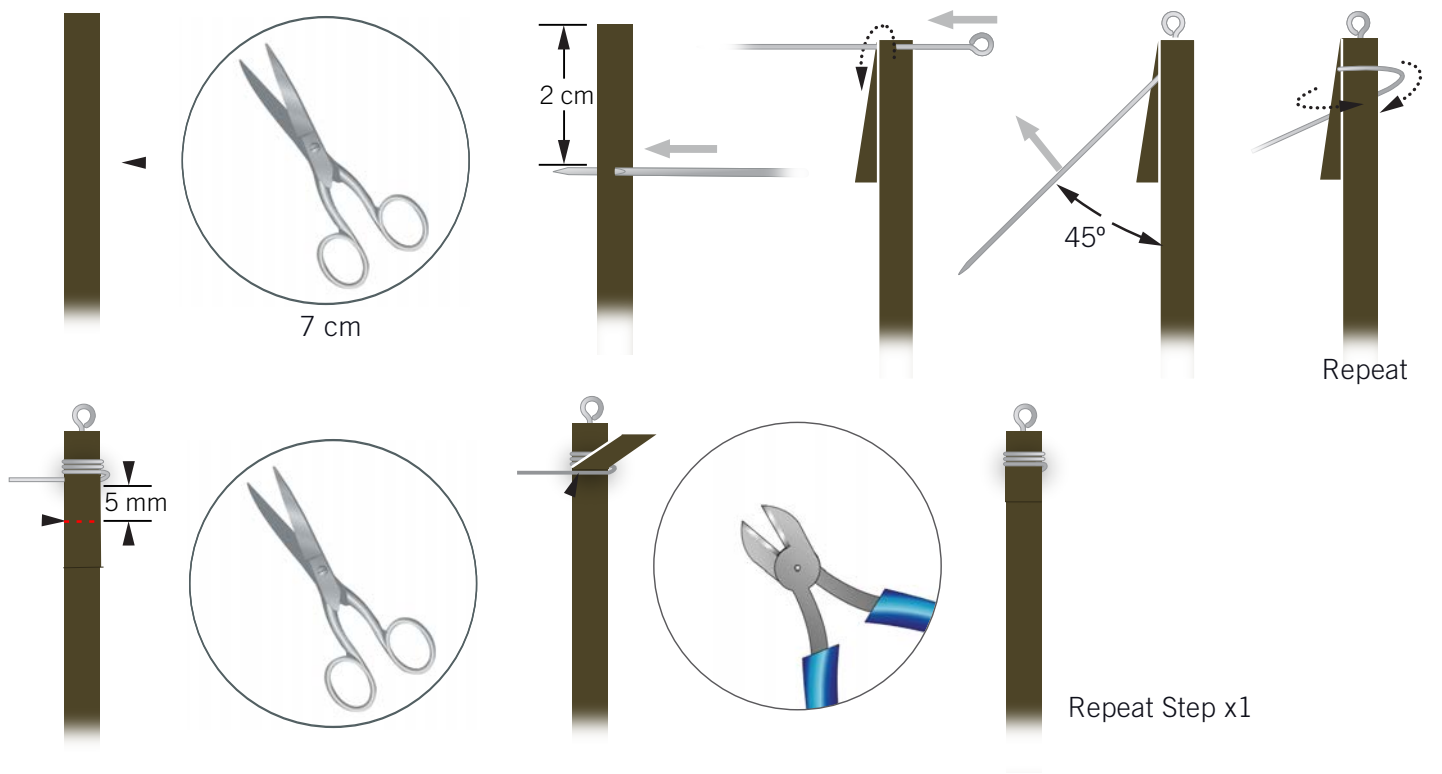
STEP 3



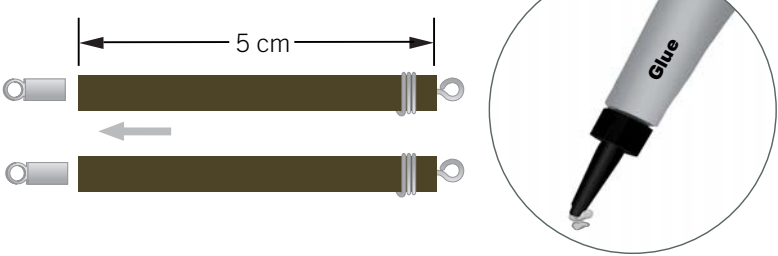
STEP 4

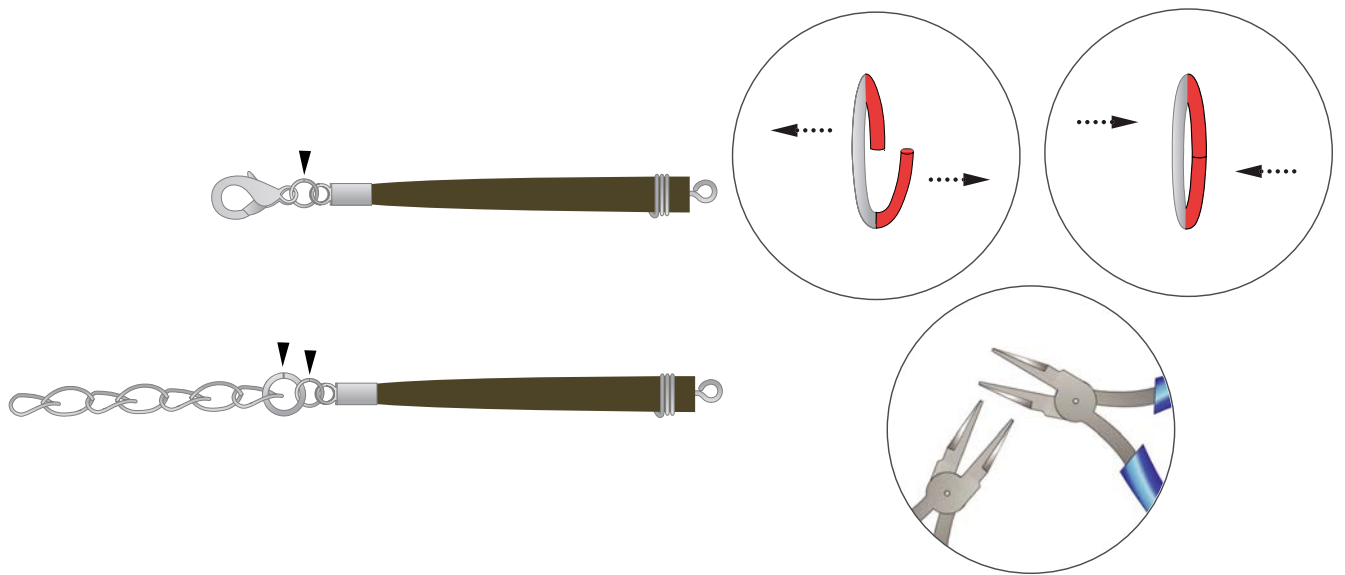


STEP 5

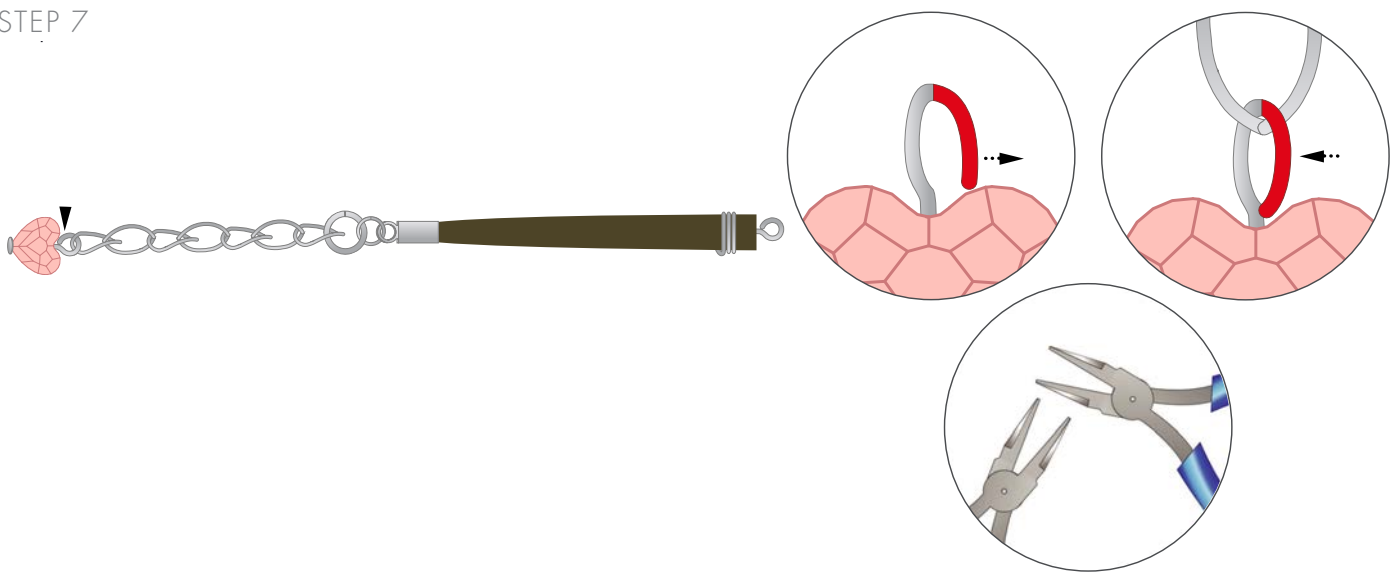


STEP 6

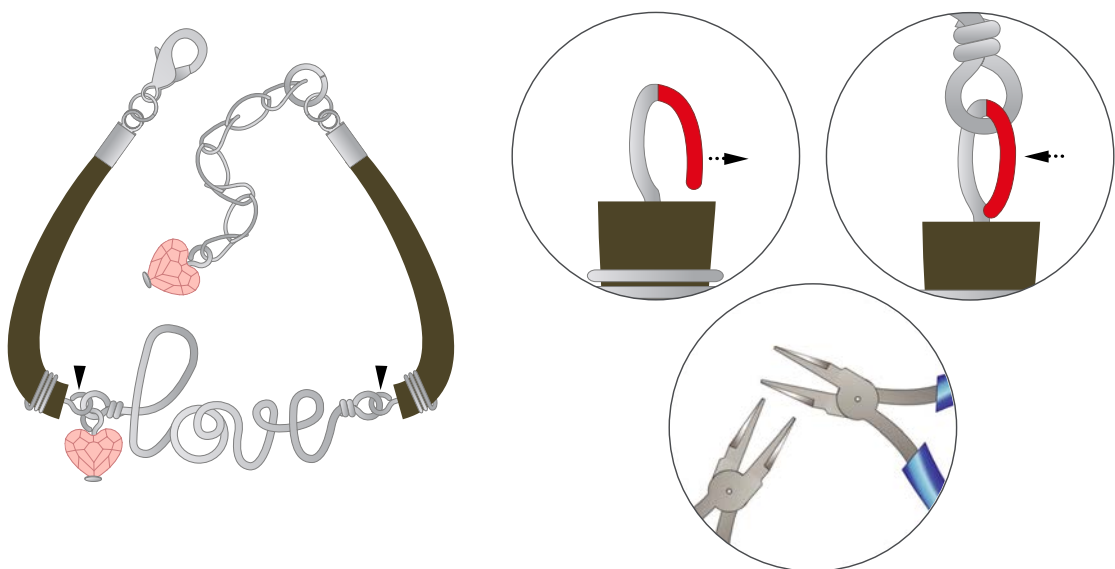




STEP 7



STEP 8



DESIGN PROJECT BRACELET "HEART LETTERS"



- STEP 1: Cut a 20 cm long piece of wire. Pull it straight and form a right angle at a distance of 3 cm from the edge and form a loop as shown in the pictures along with this step.
- STEP 2: Form the word "Love" with the wire.
- STEP 3: Insert Swarovski Bead art. 5741 8 mm Blush Rose onto a head pin and turn a loop at the end. Repeat this step.
- STEP 4: Open the loop of one of the head pins from the previous step and attach it to the loop of the "Love".
- STEP 5: Cut a 7 cm long piece of leather ribbon. With a leather needle pierce the leather ribbon 2 cm from the edge and fold the rest of the leather down. Remove the needle and insert an eye pin through the opening made with the needle. Turn the eye pin to a 45° angle. Wind the pin over the leather ribbon three times. Push the end in between the leather ribbon. Cut the smaller end to a length of around 5 mm and cut off the excess wire of the eye pin so that it stays inside the ribbon. Repeat this step one more time.
- STEP 6: Glue the ends of the leather pieces created in step 5 into cord endings. The measurement should be about 5 cm. Attach a lobster clasp using a 4 mm jump ring to one of the ends and an extension chain on the other cord end with one 4 mm and one 6 mm jump ring.
- STEP 7: Attach the head pin with Swarovski Bead art. 5741 8 mm Blush Rose onto the extension chain.
- STEP 8: Open the loops on the ends of the leather pieces and attach to the loops in the word "Love". Close loops to secure.